

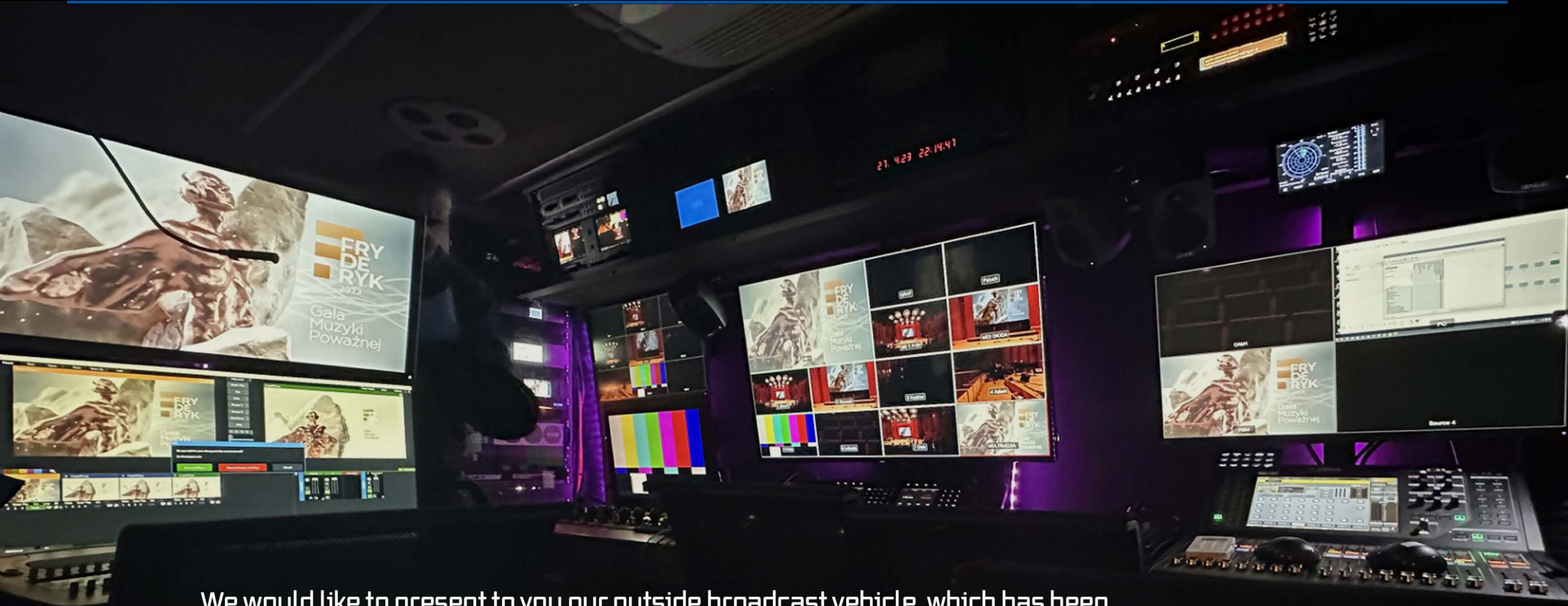


Well
well

PRODUCTIONS

Outside Broadcast VAN

Our Outside Broadcast Vehicle Project



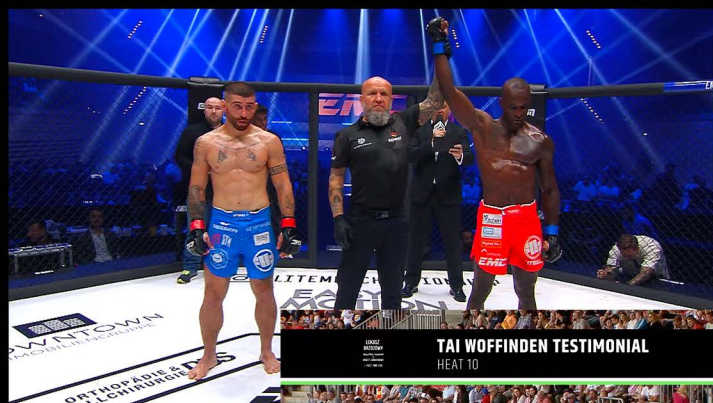
We would like to present to you our outside broadcast vehicle, which has been designed and built based on our extensive experience in television program production and live production.

Our project, prepared by an excellent team of engineers and based on broadcast television technology, meets the highest standards for safety and comfort in the professional execution of industry projects.

WELL WELL Outside Broadcast VAN

Live Productions

Since the inception of our outside broadcast vehicle, we have created hundreds of hours of programs, the vast majority of which were produced live upon the request of our clients.



TAI WOFFINDEN TESTIMONIAL				
HEAT 10				
				Pts
1	108	🇬🇧	Tai WOFFINDEN	3
2	27	🇬🇧	Jaimon LIDSEY	2
3	66	🇸🇪	Fredrik LINDGREN	1
4	302	🇵🇱	Bartek KOWALSKI	0



To cater to these productions, we utilized all the available tools equipped in our outside broadcast vehicle, such as eight cameras, a powerful video mixer, editable graphics, replays, simultaneous recording of all audio-video signals, reliable connectivity and streaming capabilities.

We have frequently expanded our core setup by incorporating additional lenses, mini cameras, a Steadicam, a camera crane, drones, and wireless connections.

WELL WELL Outside Broadcast VAN

Recorded Productions

Our extensive experience in television program production has highlighted the need for designing an outside broadcast vehicle that can fulfill additional tasks.

As a result, we have expanded its capabilities to include the recording of programs and series using non-standard cameras such as Sony FS7 and Sony FX9, utilizing S-log3.

Leveraging this option in comfortable conditions we have successfully produced several tv shows, including „Mądrzejemy z Katarzyną Bosacką” (TVN 2021-2022), „Nasi w mundurach”, and „Kocha, lubi, pasuje” (TTV 2022-2023).

This approach has also allowed us to unprecedentedly reduce the time constraints often associated with post-production.

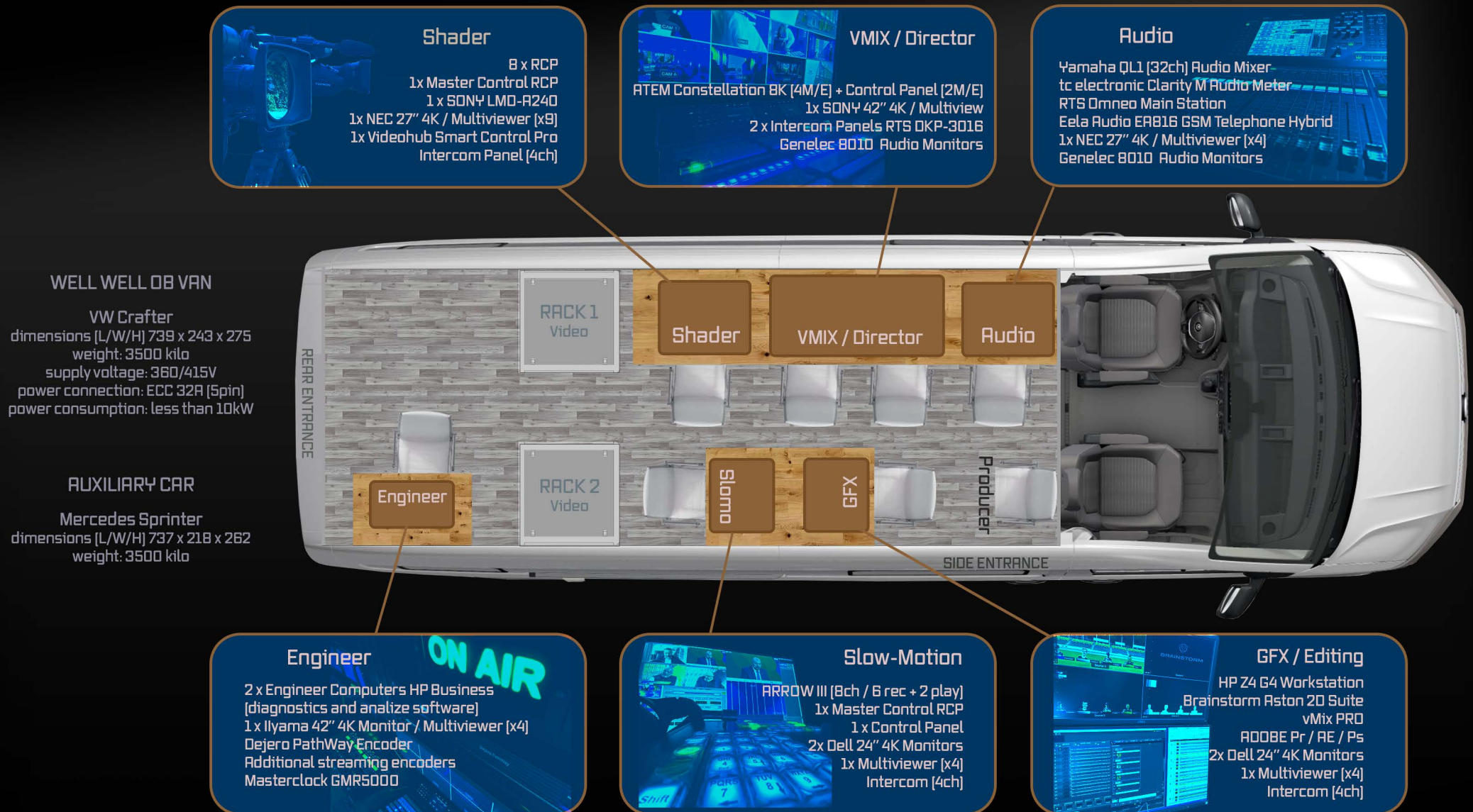


Now, being confident in our high-quality services, we would like to offer you a comprehensive production service or equipment rental with full support.

We invite you to familiarize yourself with the detailed specification of our outside broadcast vehicle.

WELL WELL Outside Broadcast VAN

Top view diagram



WELL WELL Outside Broadcast VAN

PRODUCTION AREA

ATEM Constellation 8K 4 M/E

40x 12G SDI inputs
24x 12G SDI aux outputs
4x OVE
16x Keyers
4x Media Players (400 frames/4K, 1600 frames/HQ)
4x 4K Multi Viewers
2x SuperSource
Standards conversion one every SDI input

ATEM Hardware Panel 2 M/E rows

Each row can control up to 4M/E
20 input (40 shifted) button tri-color LED
2 x 20 dedicated macro buttons
2 x fader bar
1 joystick (3-axis)
2 LCD menu displays

CAMERAS / LENSES

CAMERAS

8x Grass Valley LDK 8000 Elite Series HD Camera Channel
(LDK8000/60 Camera, LDK4502 Base Station, LDK
4640/10 RCP)

LENSES*

FUJINON HD [HA42x8.7-BERD], [HA23x7.6BERD-S6]
[ZA22x7.6BERD-S6], [ZA17x7.6BRM], [HA14x4.5BERD] x2
CANON 4K [CJ14x4.3 BIASE] x2
[*more lenses - offer on demand]

VISION

VIDEO MATRIX

Smart Videohub 12G 40x40
40 SD/HQ/12G SDI inputs
40 SD/HQ/12G SDI outputs
Smart Videohub 20x20
20 SD/HQ/6G SDI inputs
20 SD/HQ/6G SDI outputs
VideohubSmart Control Pro (x3)
Master Control Pro (x2)

OPEN GEAR

AJA DG-X-FR Rackmount Frame
2x AJA [DG-3GDA-2x4] Reclocking Distribution Card
4x AJA [DG-FS-MINI] Frame Synchronizer
4x AJA [DG-3G-AIMA] Embedder/Disembedder
1x AJA [12G-SDI] Audio Embedder/Disembedder
1x AJA [DRM--R2 DRM] Mini-Converter
1x AJA [GEN10 HQ/SD/AES] Sync Generator
3x AJA [C100A] Distribution Amplifier

PATCH PANEL

3 x CANFORD microMUSA 12 UHD 2x32

MONITORS

1x SONY 24" LMD-A1240 with VideohubSmart Control Pro
1x 28" SEETEC 4K280-9HSD-CO
1x 21" SEETEC FS215-S4K-CO
1x 15.6" SEETEC 4K156-9HSD

MASTER CLOCK

MASTERCLOCK GMR 5000
High-Precision, Multi-Function NTP & PTP Master Clock

AUDIO

DIGITAL MIXER YAMAHA QL1 (Dante)

32 Mono, 8 Stereo channels 16 Mix busses
Additional Card AES I/O MY16-AE
AVID analog output adapter
Internal effects
Audio Player Stream Deck

Stagebox YAMAHA Tio 1608-D (Dante)

16 XLR In / 8 XLR Out

AUDIO MONITORING

4x GENELEC 8010A
tc electronic Clarity M

INTERCOM SYSTEM

RTS OMNEO MASTER STATION (intermediate) 20 ports
3x OKP-3016 (pulpit 16ch, desktop)
1x AP-1800EU Access Point / 4x TR-1800 Wireless Beltpack
8X PH-88 (lightweight headset)
STUDIO TECHNOLOGIES
1x M5412 - Dante to analog interface (camera intercom)
1x M348 - 8ch intercom station
2x M374A - Intercom Beltpack (4ch)
2x M372A - Intercom Beltpack (1ch)
2x M205 - Announcer's Console with Sennheiser HMD27

HYBRID SYSTEM

EELA EAB16 GSM TELEPHONE HYBRID / Quad-Band GSM

IFB SYSTEM

1x Sennheiser IEM G4 range A, 2x bodypack receiver

MICROPHONES

4x Sennheiser MKE600, 4x Sennheiser MKH416, 4x
Sennheiser EW500 G4, 1x Shure Beta 58A, PlugOn SKP100,
3x Sennheiser EW122P B with ME4
[other audio equipment - offer on demand]

SLOW-MOTION

Slomo ARROW III with Control ZR remote panel

SSD based Replay server with 10GbE connectivity and DMR™ Racks

Arrow III is equipped with 8 bi-directional SDI I/O.
Simultaneous recording of 8 video inputs, search on all 8 channels, replay of 2 channels with transitions
Multi-Channel Recording direct in NLE native file format with DVCPro/ProRes/DNxHD codecs.
Support of XDCAM50/XAVC100 export

EVS XT3 8 channel HD server
[*option - offer on demand]

EVS XT-GO Server
[*option - offer on demand]

RECORDING

ATOMOS Shogun Studio 2
8-channel HDp60 /2-channel 4Kp60 SSD recorder
Recording Codecs
CONG, ProRes RAW, ProRes, DNxHD, DNxHR
Resolutions
6K (RAW only), 4K DCI, 4K UHD, HD Progressive (up to 120p), HD Interlaced (up to 60i)

2x BMD HyperDeck Studio 4K Pro

TRANSMITTER / RECEIVER

DEJERO PathWay EC - HEVC Encoder
Transmit broadcast quality live video over IP networks
2 x Ethernet LAN/WAN or satellite / 1 x dual-band Wi-Fi
6 x 3G/4G/LTE integrated modems (12 external antennas)

DEJERO WayPoint 50*
The WayPoint 50 receiver reconstructs broadcast-quality video transported over multiple IP connections from a Dejero transmitter, decodes HEVC or AVC, and outputs to SDI or MPEG-TS workflows
[*optionally we can deliver to our client]

Additional Streaming Systems:

2x Marschall VAC-23SHU3 Web Presenter
1x BMD Web Presenter

GRAPHICS WORKSTATION

HP WORKSTATION Z4 G4
1x AJA Kona 4 (4K)
1x BlackMagicDesign DeckLink SDI 4K



GRAPHIC SOFTWARE

Aston is a 2D/3D motion graphics creation, CG and playout solution developed with the designers in mind, built from the ground up to be extremely user friendly so the operators can concentrate on creation rather than pure operation. Aston is resolution independent and works with any HDTV flavour, 4K or even higher resolutions for larger screens.



EDITING SOFTWARE

Adobe Apps Pack for video editing, motion graphics, visual effects, animation and more.
Premiere Pro - leading desktop video editor
Media Encoder - output video files for virtually any screen
After Effects - motion design and visual effects software
Photoshop - image editing software



vMix

LIVE VIDEO PRODUCTION SOFTWARE

vMix is live streaming and production software that allows you to create professional quality productions on computer.
vMix gives the power to add multiple cameras, videos, NDI sources, remote guests using vMix Call, images, audio, web streams, Powerpoint, titles, virtual sets, chroma key, and much more to production

Contact us

If you have any questions or would like to inquire about pricing for our services, please feel free to contact us,

Adress

Well Well Productions Sp. z o.o.
Saska 60/2
03-968 Warsaw / POLAND

E-mail

produkcja@wellwell.tv

Phone

+48 505 180 430

WELL WELL Outside Broadcast VAN